



kinetics
nail academy

2

EDUCATION
PROGRAM 2018

SOLAR GEL SYSTEM

V1.2.

SOLAR GEL SYSTEM

KINETICS EDUCATION
PROGRAM 2018

SOLAR GEL

SOLAR GEL SYSTEM



NEW GENERATION NAIL POLISH

SolarGel is a 2-step next-generation nail polish system which uses elements of gel polish to make:

- Extra shiny gloss;
- Gel-like look;
- Scratch-resistant surface
- Longer wear time.



3D BRUSH

- The new generation 3D brush ensures precise product control and allows you to work quickly.
- Its rounded wide shape facilitates a perfect application with only a few strokes.



TRADITIONAL NAIL POLISH

Traditional nail polish systems are based on solvent blends with pigment. When applied to the nail, the solvent evaporates and leaves behind a thin coating of pigment – professionally referred to as “film.” This system has been known for many years. It is easy to remove (less than 2 min.), but the wear time of such traditional nail polish is relatively short (0 - 6 days).



GEL POLISH

Since 2010, gel polish systems have become more and more popular in many countries. Gel polish systems contain special light-activated ingredients (similar to those used in the dental industry) to dry the film under a UV/LED lamp. Such systems are much more durable, lasting up to 3 weeks. The only downside is a relatively longer removal time, which is up to 15 minutes depending on the nail condition and specific system.



SOLAR GEL
NEW GENERATION NAIL POLISH

- TRADITIONAL POLISH+GEL POLISH
- CURES UNDER NATURAL LIGHT

New generation nail polish combines elements of traditional nail polish and gel polish.

Such a system uses some elements from the gel polish that react to the light.

- REQUIRES NO UV/LED LAMP

While gel polish systems require a UV/LED lamp, this system does not require curing under a lamp; it cures under natural light.

These systems do not have any specific industry-wide names and are known as weekly polishes, no-lamp polishes, or new-generation polishes. At Kinetics, we call these polishes SolarGel.



SOLAR GEL TOP COAT -
LIGHT-ACTIVATED INGREDIENTS

Ingredients called **photo-initiators** are included in the SolarGel top coat formulation, and together with polymers they ensure the coating is stronger and harder than the traditional nail polish top coat. The harder coating explains why the SolarGel system resembles the gel polish look and has better shine and a scratch-proof surface.

- STRONGER
- HARDER FILM
- EXTRA SHINE
- EXTRA WEAR TIME

REACTION WITH COLOR

Not only do the light-sensitive ingredients (photoinitiators) make SolarGel Top Coat harder, but they also react with a special ingredient in the color. Once these two ingredients react together, they result in a stronger, more durable film compared to traditional nail polish systems.

This explains why SolarGel is called a 2-step system and why the wear time is longer compared to regular nail polish systems.

Although SolarGel color ingredients are not light-sensitive, it is very important they work together with the SolarGel Top Coat because they are only activated when they touch each other. Without using the Top Coat, the SolarGel system will be no different than any traditional nail polish systems (no extra shine, no extra wear, not harder). Always use SolarGel Top Coat in combination with SolarGel Color to get more durable and shinier results.



HARD VS. SOFT SURFACE

There is a simple example to help you understand the difference between harder and softer surfaces. Think of a regular glass bottle vs. a plastic water bottle – which one is shinier? The glass bottle is shinier, of course, and the reason is indeed the harder surface.



SOLAR GEL WEAR TIME

The extra hardness and durability formed by SolarGel Top Coat & SolarGel Color are the reason why the system has longer wear time than traditional nail polish. On average, it is 2 - 4 days **more**.

USERS	DAYS
20%	10+
60%	3-10
20%	2-3

TESTED WEAR TIME

Internal SolarGel system tests show that about 20% of users will have wear time of 10 days or more, and 20% of users will have wear time of 2 - 3 days. About 60% of users will have wear time between 3 and 10 days. In all tests, SolarGel showed 2 - 4 days more wear time compared to traditional nail polish.

The wear time of SolarGel is up to 10 days.



NAIL SURFACE IS OILY

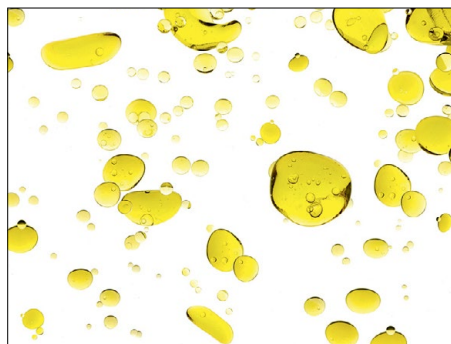
As we remember from nail anatomy, our natural nails are composed of water and oils. Both travel through the nail plate layers using microscopic tunnels ending at the surface of the nail plate. This is the reason the nail surface is moist and oily. People with oily skin have more oily nail plates. This is important to notice before SolarGel polish application, as it increases the risk of the product lifting.



NO ADHESION ON OILY SURFACES

What happens when we want to fix an adhesive bandage to oily skin? Nothing sticks to oily surfaces, which is easy to understand. In order to create a strong bond, the surface should be clean and dry.

Exercise: Place adhesive tape on oily paper and on dry paper. Use a simple sheet of paper to test the difference.



CLEAN THE SURFACE

This is why we use solvents such as acetone or alcohol to clean the nail surface before applying a coating. Solvents dissolve (remove) moisture and oil. Professionally, we use the term “dehydrate.” Only dry and clean surfaces can ensure a perfect bond. If we want the nail coating to last longer, it should have strong adhesion to the nail. This is only possible on dry and clean surfaces.



WEAR TIME & OILY SURFACE

Let's remember 2 things about oil impact on wear time.

- Nail preparation is the most important step in SolarGel nail polish application – wear time depends on nail preparation. Leaving even small amounts of moisture or oil on nails will shorten wear time.
- People with oily and moist skin / nails will have shorter wear time compared to people with normal skin / nails. Educate your clients about this fact.



WEAR TIME & SOFT NAILS

Some people have strong and durable nails, while some have soft and peeling nails.

It is evident that better adhesion will always occur on strong and hard nails.

This explains why people with thin, soft and peeling nails experience less wear time than people with strong and healthy nails.



WEAR TIME & LIFESTYLE

Lifestyle is a major factor that has impact on nails and wear time.

Water is the #1 factor in regards to damage to the nail condition and shortened wear time. Long and frequent exposure to water makes natural nails brittle, soft and peeling because water damages nail cells (remember the picture with damaged keratin). Nurses, hairdressers and bartenders are a few examples with extensive hand exposure to water. Such customers will have less wear time.



ACTIVE LIFESTYLE

Active lifestyles, such as sports or outdoor activities, facilitate nail growth because of increased blood circulation in the nail matrix. However, it is just logical that such people are likely to have mechanical damage of the nails more often. Therefore, expect shorter wear time on customers with active lifestyles, especially during the high-activity season (beach, summer, gardening, etc).

[illegible]

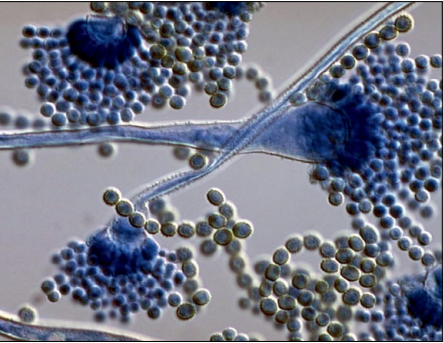
STEP BY STEP

KINETICS EDUCATION
PROGRAM 2018

SOLAR GEL SYSTEM

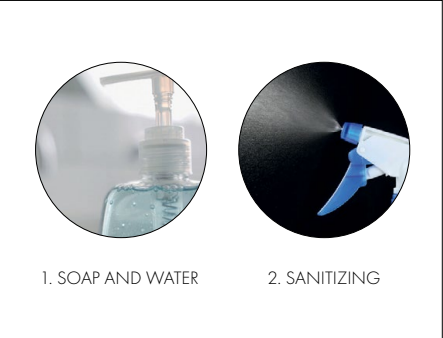
STEP BY STEP





STEP 1: SANITIZING

Remember, the world around us is crowded with millions of microorganisms, but not all of them are harmful. The bad ones are called pathogens. Examples include **pathogenic fungus** (think of nail fungus), pathogenic bacteria (think of Green nail syndrome or tuberculosis) and pathogenic viruses (think of HIV or Hepatitis C) that can cause serious diseases. Always remember to sanitize your own hands and your client’s hands.



SANITIZING

Have the client wash his or her hands with soap and water and sanitize them with an antiseptic solution compliant with local regulations. Many countries have regulations in place for using sanitizing agents. If you are not sure, the best method is to find a local supplier of hospital-grade antibacterial soaps and antiseptic solution.



STEP 2: POLISH REMOVAL

Remove nail polish with cotton pads and Black or Green Lizard polish remover. Use Green Lizard polish remover for clients with brittle, soft and peeling nails – it is acetone-free and has less of a drying effect on nails. For clients with healthy nails, use fast-action Black Lizard polish remover.



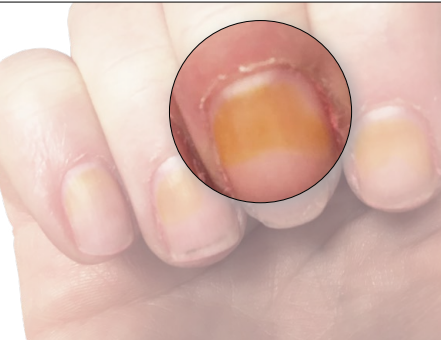
KINETICS POLISH REMOVERS

- BLACK LIZARD: fast-action polish remover, quickly removes nail polish by lifting the color off the nail plate, leaves no residue on the skin and has a fresh Aloe Vera scent.
 - GREEN LIZARD: acetone-free polish remover, safe for weak and damaged nails and has an Apricot scent.
- (Both available in 900 ml and 225 ml).



STAINING

Certain polish pigments can get absorbed by the nail plate and cause staining. Nowadays, most professional nail polish is formulated using high quality pigments, and the risk of staining is small. Yet strongly pigmented bright to dark colors can still cause nails to stain especially porous, soft and damaged nails. Healthy nails are less likely to develop staining.



CUTICLE REMOVER STAINING

Be careful and do not mistake nail yellowing from improper use of cuticle remover for nail polish staining. While yellowing from the improper use of cuticle remover occurs at the cuticle area and in the middle part of the nail plate, it diminishes towards the end of the nail plate.



PROFESSIONAL
HIGH QUALITY
REMOVERS

- HIGH SOLVENT CONTENT
- FAST ACTION
- NO STAINING
- WORKS EVEN ON OLD POLISH

REMOVER QUALITY

Use professional quality polish remover to minimize staining. Professional quality polish remover contains a high concentration of solvent and dissolves even old nail polish quickly.



NON-PROFESSIONAL
REMOVERS

- LOW SOLVENT CONTENT
- HIGH WATER CONTENT
- SLOW ACTION
- REQUIRES RUBBING

NON-PROFESSIONAL REMOVERS

Non-professional polish removers often have a low content of solvent and a high content of water, which makes them slow and inefficient. When using such removers, it takes more time and requires rubbing to remove the polish. So, instead of quickly removing pigment from the nail plate, nail technicians end up rubbing it forth and back until it is literally penetrated into the nail plate.



PROPER REMOVAL

- For proper removal:
- Soak the cotton pad with the proper amount of Green or Black Lizard polish remover. The cotton pad should not be too wet nor too dry. A too dry cotton pad will not dissolve the polish, while one too wet will run into the cuticle and nail fold and color it.
 - Apply the cotton pad on the nail and wait for it to dissolve the polish. Light colors require about 1 sec., dark colors about 3 sec., and glitters about 5 sec.
 - DO NOT RUB.
 - Move your pad in one direction only, pulling it from the cuticle down to the tip of the nail. Do not move it back and forth, as this can cause nail polish pigment to stain. Change cotton pads as soon as they get stained with color.



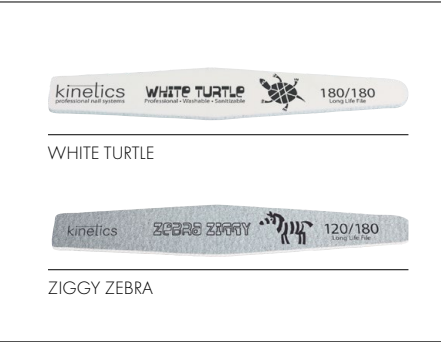
USE BASE COAT

Base coats, such as Gold Hardeners or Nano Treatments, help to protect the nail plate. Using a base coat can help to seal and protect the nail plate, therefore reducing risks of staining.



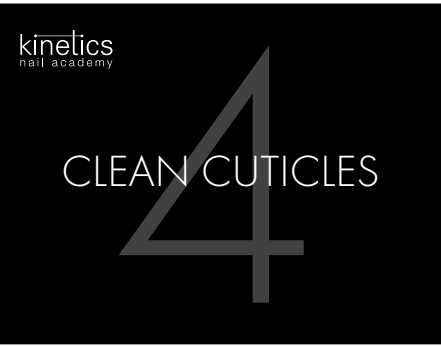
STEP 3: SHAPE THE NAIL

Use a White Turtle (180/180) file to shape all 10 nails. Remember to file from both sides towards the center of the nail. Because the nail plate is composed of keratin cells arranged like a fish skin, sporadic filing (back and forth) can break the nail plate open and facilitate peeling and splitting.



FILE OPTIONS

- Kinetics offers 2 nail files to shape the nail with:
- WHITE TURTLE file has 2 equal sides with 180 grit. It is suitable for natural nails and has a strong plastic base for durable usage. It is sanitizable.
 - ZIGGY ZEBRA has a different grit on each side: 180 and 120. It is not sanitizable.



- CLEAN METICULOUSLY
- REMOVE ALL RESIDUES
- PRONE TO LIFTING

STEP 4: CLEAN CUTICLES

We already know how important it is to remove any residue from the nail plate. The cuticle area is particularly sensitive to polish lifting; therefore, nail technicians should pay extra care to meticulously cleaning the cuticle area.

KINETICS CUTICLE OFF

Start by applying Cuticle Off remover on one hand only. Cuticle Off contains a high concentration of potassium hydroxide which efficiently softens and dissolves any non-living tissue. Apply it on the cuticle of all 5 nails on one hand only.

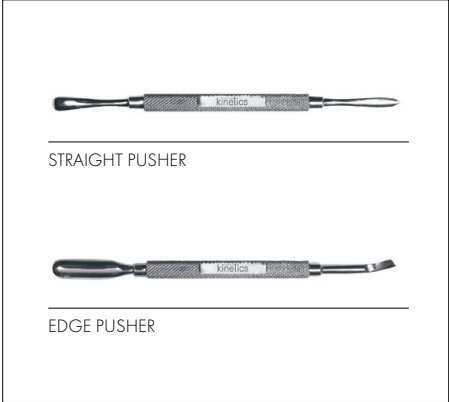
- Cuticle Off has a fast-action formula;
- Quickly removes dead skin in the cuticle area;
- It contains Aloe Vera extract for instant moisturizing and soothing.

- Product use:
- Apply Cuticle Off on the cuticle area on 1 hand.
 - Leave for 10 - 15 seconds.
 - Proceed with next step.



PUSHING BACK CUTICLE

Use Straight or Edge Pusher to immediately push back cuticles. Work carefully, as damaging the nail matrix can cause further damage to the nail, such as nail ridges, wrong shapes, etc.



KINETICS PUSHERS

- Kinetics has 2 pushers: the straight pusher and the edge pusher. They are both made of stainless steel and are of medical grade.
- STRAIGHT PUSHER is dual-ended pusher for manicures and pedicures. It has a rounded end to push back cuticles and a pointed end to remove any residue.
 - EDGE PUSHER is a dual-ended pusher for precise edge work at the cuticle area. It has a rounded end to push back cuticles and an edged blade to remove any non-living tissue.



RINSE OFF

Rinse off the product quickly in the manicure bowl (5 sec.). Any residue of potassium hydroxide, which is the active ingredient in Cuticle Off, may cause yellowing of the nail plate. To avoid this, ensure the product is completely washed off from the nail plate.

! Rinse off with water to avoid nail staining and skin irritation.



YELLOWING BY CUTICLE OFF

Sometimes nail technicians mistake yellowing caused by improper use of cuticle remover as a result of polish staining. There is a way to distinguish between the two. If the yellowing occurs in the middle of the nail plate towards the cuticle area, there is a good chance that this is a failure to properly wash off Cuticle Off. Another reason to rinse the Cuticle Off after application is that overexposure of potassium hydroxide can cause skin irritation. If irritation occurs, wash with running water for 15 minutes.

In all cases, avoid contact with eyes, as potassium hydroxide can cause blindness. In case of contact with eyes, wash immediately under running water for 15 minutes and consult a doctor.



REPEAT WITH OTHER HAND

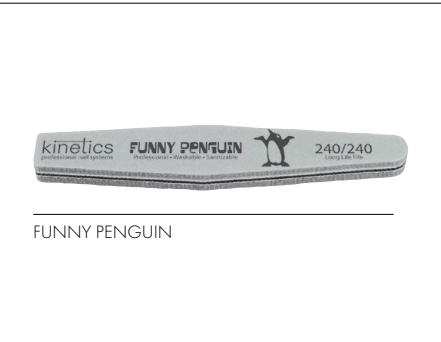
- Now repeat the same steps on the other hand (apply Cuticle Off, push back cuticle, soak).
- Next, pat dry both hands with a clean towel.
- Remove any non-living tissue from the nail plate using the Edge Pusher or Straight Pusher.
- If needed, cut any hangnails and other non-living tissue with cuticle nippers.

As we remember, this is a very important step to ensure good wear time. Any residue left at the cuticle area can cause lifting of the nail polish. Carry out this with the utmost care and make sure not even the tiniest bit of residue is left behind.



STEP 5: BUFF THE SURFACE(optional)

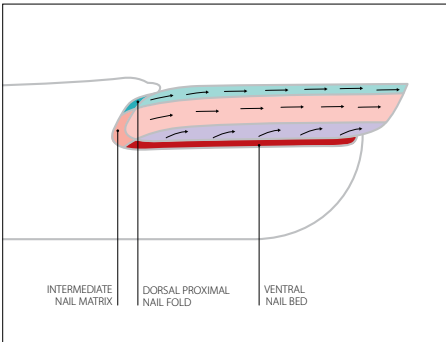
This step is optional, use it for oily nails or customers you already know have short wear times. Use the Funny Penguin (240/240) sponge file to remove shine on all 10 nails. Remember to buff in the growth direction of the nail, not against it. Keratin cells grow towards the free edge of the nail, and buffing in the counter-direction can break cells open and cause peeling.



KINETICS FILE FOR BUFFING

Funny Penguin file for buffing is:

- For all types of nails and extensions;
- 240-grit smooth sponge on both sides;
- Washable;
- Sanitizable.



PAY ATTENTION WHILE BUFFING

There are 3 things you should pay special attention to if you want your surface to be perfect.

- **BUFF HIDDEN AREAS!**
Make sure the entire nail surface is buffed. Often nail technicians fail to buff hidden areas of the nail plate, such as the areas under the lateral nail fold. Use your thumb and index finger to pull back the lateral nail fold and work with the rounded end of the sponge file to ensure all hidden areas are covered. Failure of this step may cause polish lifting from the sides.

- **DO NOT OVERFILE**
Do not overfile. Remember – the nail plate is composed of 3 types of keratin. The hardest keratin is on the top of the nail and softer layers are in the middle. The more you file, the more you remove the hardest layer, which is the best for good adhesion. If you remove too much of this layer, the softer layer will have less adhesion. Therefore, the nail polish will chip faster.

- **USE A FRESH FILE!**
Make sure you always use a fresh sponge file. Check your file and change it immediately as surfaces become dull. Working with a dull file will not remove oily residue, and the wear time will be compromised – the polish will chip faster.

REMOVE DUST

Once finished, use the hard-bristle dust brush to remove dust from the nail surface. In no case should you touch the nail surface with your own fingers, as they are oily and will leave residue on the nail surface.

kinetics
nail academy

6

DEHYDRATE



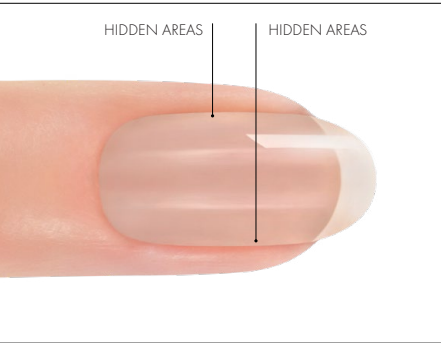
STEP 6: DEHYDRATE

This is the final step before SolarGel color application. This step removes all the moisture and remaining residue from the nail plate after the nail is ready for SolarGel application. Failure of this step can result in shorter wear time of the SolarGel system.



REMOVER CHOICE

Use the same polish remover you were using for polish removal – Green Lizard or Black Lizard. Apply a sufficient amount of the remover to the cotton pad and cleanse the surface of the nail thoroughly.



HIDDEN AREAS

Make sure the entire nail surface is cleansed. It is a common mistake to fail in cleansing hidden areas of the nail plate, which are covered by the lateral nail fold. Use your thumb and index finger to pull back the lateral nail fold and work with the cotton pad until the entire nail surface is cleansed.



TOUCHING THE NAIL

In another common mistake, nail technicians touch the cleansed nail surface with their fingers, either by accident or to remove tiny dust particles. Since our fingers are oily and moist, they will leave oil and moisture on the natural nail plate, and the wear time of the SolarGel system will be compromised.



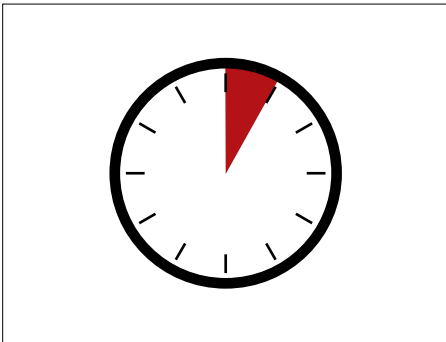
BLOWING ON THE NAIL

For the same reason, avoid blowing on the nail to remove the dust or any particles. While blowing, we cover the nail with moisture, which works against adhesion.



REPEAT CLEANSING

If for any reason you need to cleanse the nail again, just use a fresh cotton pad soaked in polish remover and repeat the entire step. It is completely normal to repeat cleansing if needed.



5 MINUTES

It is important you start polish application no later than 5 minutes after nail cleansing. The nail starts producing moisture, and moisture from the air can also settle on the nail. So, if for some reason, such as a phone call, your customer did not start the application right after cleansing, just repeat the cleansing step.

kinetics
nail academy

7

APPLY NAIL TREATMENT

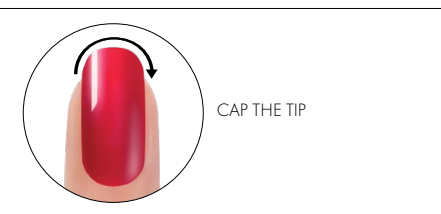


STEP 7: APPLY NAIL TREATMENT OR BASE COAT

For customers with soft, peeling and damaged nails we recommend using nail treatment. This will increase wear time by 1 - 2 days and improve the customer's nail conditions. The two most popular treatments are Gold Hardener for slightly damaged and Shark for severely damaged nails.

kinetics
nail academy

SOLARGEL
APPLICATION



STEP 8: SOLARGEL APPLICATION

Start with taking a proper amount of SolarGel Color on the 3D brush, and apply it in a thin coat to each nail. Put a small drop in the middle and work down with one stroke to the edge of the nail.

SOLARGEL APPLICATION TIPS

- CUTICLE
Work carefully at the cuticle area and avoid polish getting on the cuticle. Applying the product over the cuticle or nail fold will increase its chance of lifting. Because of the round cut of the 3D brush, it fits well at the cuticle area, making your work much easier.
- THIN LAYER
It is essential you apply the SolarGel Color in a thin layer, which will dry faster and form a stronger film. A stronger film ensures better wear time of the SolarGel system.
- CAP THE TIP
Cap the tip of the nail. As the nail is composed of 100 layers of keratin cells, the free edge of the nail is the most prone to peeling. Capping it will eliminate potential peeling and increase the wear time of the SolarGel system.
- SECOND COAT
SolarGel Color is strongly pigmented and generally has a good coverage. Apply the second coat in the same way as the first and cap the tip.
- 2 MINUTES
Before proceeding to the next step, make sure the color is dry to the touch. This usually takes up to 2 minutes, and normally, once you finish color application on the other hand, the first hand will already be cured. However, the cure time depends on weather conditions, and there are certain conditions where it might take more time to cure. Typically, polish will cure slower at cold conditions and in humid climates. If you happen to work in such conditions, give the polish sufficient time to cure properly.



kinetics
nail academy

SOLAR GEL
TOP COAT



UNCURED SOLARGEL COLOR

Uncured SolarGel Color will cause bubbles on the surface of SolarGel Top Coat. This is because SolarGel Top Coat cures faster than SolarGel Color, and while the solvent remains in the SolarGel Color, it will break through the already cured SolarGel Top Coat, leaving surface bubbles.

STEP 9: SOLARGEL TOP COAT

This product ensures all the benefits of the SolarGel system. It works with the SolarGel Color to form a strong and long-lasting film, and on its own it forms a hard, scratch-proof and very shiny surface that resembles a gel polish look. Apply one coat to each nail, making sure you completely cover the entire surface of the nail plate. Again, work carefully at the cuticle area and avoid getting the product on the cuticle or proximal nail fold. Such failure will result in the product lifting.

CAP THE TIP

This is as important as with the SolarGel Color. Cap the tip from the front to extend SolarGel wear time and eliminate peeling.

LET THE PRODUCT DRY

SolarGel Top Coat dry time is 60 sec. Complete dry time is 10-15 min depending on various factors, such as humidity, temperature, draught.

kinetics
nail academy

10

MOISTURIZATION



STEP 10: MOISTURIZING WITH CUTICLE OIL

- Use the Kinetics Cuticle Oil of your choice.
- Apply a small drop on the nail fold.
- Massage the oil gently into the skin around the nail using circular motions. Massage will stimulate blood circulation, which will bring more nutrients to the matrix and facilitate nail growth.
- Recommend daily use of cuticle oil to your customer, as this is the easiest yet most efficient way to keep your nails and skin around the nail healthy.
- Moisturizing is an important part of keeping skin and nails healthy. Even if you do not apply cuticle oil directly on the nail plate, you can still apply it over the matrix area, and the oil will penetrate the matrix, therefore improving the condition and nail growth.



MOISTURIZING WITH HAND LOTION

Apply a small amount of Kinetics Hand & Body Lotion to the skin, and lightly massage it using circular motions. The skin, like the nails, is best protected by regular moisturizing. Kinetics Hand & Body Lotion contains shea butter, which is known as an efficient moisturizer. The formula has a light and airy texture and does not leave a greasy feeling.



SOLARGEL SYSTEM

Now you are aware of the SolarGel systems benefits and how it is different from traditional nail polish systems. Go and share this knowledge with your students and customers now.

kinetics
nail academy

OPTIONAL
TOP COAT



KWIK KOTE

If your client is looking for a very quick drying time, you can optionally choose Kwik Kote top coat. It applies in a very thin layer, gives high shine and touch-dries in 30 seconds. Apply as a regular top coat. Using Kwik Kote will not provide as long a wear time as SolarGel Top Coat. Wear time will be like any traditional nail polish system. This is a perfect choice for pedicures.




MATTE TOP COAT

This optional step turns any nail color to a matte effect. Apply as a regular top coat. Please note, using Matte Top Coat will not give as long a wear time as SolarGel Top Coat. The matte effect usually lasts 1 - 2 days; educate your customers.

STEP BY STEP


SOLARGEL NAIL POLISH SYSTEM | APPLICATION AND REMOVAL



1

SANITIZE


Have client wash their hands with soap and water. Sanitize both your client's and your hands with an antiseptic solution compliant with your local regulations.



2

REMOVE POLISH


Remove nail polish with cotton pads and Black or Green Lizard polish remover. (If the client has Shield Gel Polish on their nails, refer to the Step by Step removal sheet for the correct removal technique).



3

SHAPE THE NAIL


Using a White Turtle 180/180 file, shape all 10 nails.



4

CLEAN CUTICLES

1. Apply Cuticle Off to cuticle area of one hand only.
2. Immediately push back cuticles with the Straight or Edge Pusher.
3. Then quick soak this hand in warm water for 5 sec.
Repeat these 3 steps to the other hand. Pat dry both hands with clean towel. Remove any non-living tissue from the nail plate with a stainless steel Pusher. Cut any hangnails and other non-living tissue.



5

BUFF THE SURFACE(Optional)

If needed, very lightly buff the nail surface to remove shine of all 10 fingers with the Funny Penguin 240/240 sponge file. Remove dust from all fingers with a dust brush.



6

DEHYDRATE THE NAIL PLATE

Wipe all 10 nails with a cotton pad and a Lizard polish remover to remove oil and dust from nail plate.



7

APPLY THE TREATMENT(Optional)

Apply nail treatment of your choice, same as you would apply base coat. Proceed with the next step.



8

SOLARGEL COLOR APPLICATION

Apply one thin coat to each nail using a light touch. Seal the tips of nails. Repeat by applying a second thin coat to each nail with a light touch. Seal the tips of nails. Take a 2-minute pause to let dry before applying the top coat.



9

SOLARGEL TOP COAT APPLICATION

Apply one coat to each nail with a light touch, ensuring you completely cover the color on the nail surface. Then seal the tips of the nails with the top coat.



10

MOISTURIZE CUTICLES & SKIN

Carefully apply aromatic cuticle oil to skin area above the cuticle. Gently massage the oil in the skin around the nail in circular motions. Apply one pump of Hand & Body Lotion and massage into the skin to moisturize it.

PRODUCTS AND EQUIPMENT NEEDED FOR SOLARGEL NAIL POLISH SERVICE

- KINETICS:

 - Antiseptic sanitizing product
 - Stainless steel Straight or Edge cuticle Pusher
 - White Turtle 180/180 file
 - Funny Penguin 240/240 sponge file
 - Kinetics Cuticle Off
- OTHER:

 - Kinetics Hand and Body Lotion
 - Aromatic Cuticle Oil
 - SolarGel Nail Polish color
 - SolarGel Nail Polish Top Coat
 - Black or Green Lizard Polish Remover
 - Hand towel
 - Cotton pads
 - Dust Brush

TROUBLESHOOTING

PROBLEM	REASON	SOLUTION
LIFTING FROM FREE EDGE	• Weak nails	• Application of Nano Treatment or Gold Hardener as base coat
	• Peeling nails	• Application of Nano Treatment or Gold Hardener as base coat
	• Different nail plate shape	
	• Long soaking in water	• Short soaking time before polish application
	• Thick application of polish	• Thin coat application
	• Not capping or sealing the free edge with polish	• Cap or seal free edge
	• Top coat not applied	• Apply proper top coat
	• Wrong filing technique	• Use the Funny Penguin 240/240 sponge file to complete free edge filling
LIFTING FROM THE CUTICLE AREA	• Improper nail plate preparation	• Clean nail plate of all non-living tissue
	• Residue left on nail	• Clean nail plate of all residue with a non-oily remover or alcohol
	• Use of oil-based remover	• Use non-oil-based removers
	• Long soaking in water	• Short soaking time before polish application
	• Product applied on skin and cuticle	• Carefully apply polish to nail plate only, leaving a tiny space around the cuticle
LIFTING OR PEELING OFF WHOLE NAIL	• Naturally oily nail	• Apply Dehydrator before polish application
	• Improper nail plate preparation	• Clean nail plate of all non-living tissue
	• Long soaking in water	• Short soaking time before polish application
	• Thick application of polish	• Thin coat application
BUBBLING	• Bottle shaking	• Never shake bottle
	• Frequent in and out of bottle brush movement	• Restrict the movement
	• Application of top coat without a pause time	• Wait 2 minutes after the second coat of color before applying top coat
	• Thick application of color	• Always apply thin coats of the color
STAINING	• Condition of nail plate	• Use light, neutral, translucent or pastel colors
	• Over-filed nails	• Use light, neutral, translucent or pastel colors
	• Using a slow-action remover	• Use Black Lizard polish remover
	• Rubbing the nail to remove polish	• Apply cotton pad and Black Lizard polish remover on nail, wait 3 seconds and wipe away from nail
YELLOWING	• Cuticle remover not rinsed off	• Rinse Cuticle Remover off with water and a Gentle Soak soap
SURFACE SHINE	• Not enough Top Coat	• Apply enough Top Coat by gliding the brush to completely cover the color
	• Application of top coat without a pause time	• Wait 2 minutes after the second coat of color before applying top coat

SERVICE COST

SOLAR GEL MANICURE

DESCRIPTION	QTY	AVR SALON PRICE EUR	COST PER SERVICE EUR
Polish Remover 1.000 ml	160	10,00	0,063
Cuticle Off 15 ml	60	4,50	0,075
SolarGel Color 15 ml (2 coats)	30	4,50	0,150
SolarGel Top Coat 15 ml	40	8,00	0,200
Cuticle Oil 75 ml	400	9,00	0,023
Hand & Body Lotion 250 ml (1 pump)	120	6,50	0,055
			Total EUR: 0,57

Kinetics Nail Systems Ltd.
Riga, LV1026, LATVIA
Fax: +371 677 184 38
info@kineticsnails.com

kineticsnails.com